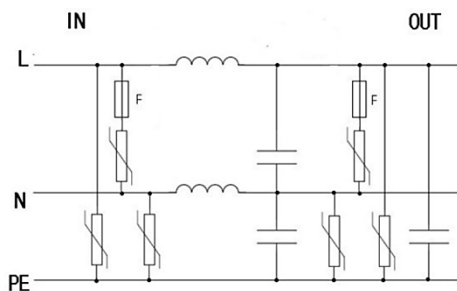


Surge Power Filter Series Box Type

(Single Phase 20A/32A/45A, 50 kA Primary)



Basic circuit diagram



Connection diagram

Applications

- Secondary power circuit / Sub-boards
- Telecommunication System / Rectifiers
- Process and Control System / UPS <6 kVA
- Computer System / Medical Systems
- All sensitive Electronic Equipment

Technical Data

Model No.	S-BSF50-1/320-20A	S-BSF50-1/320-32A	S-BSF50-1/320-45A
In accordance with	IEC61643-11:2011; UL1449 3rd; IEC610006; ANSI/IEEE62.41; AS1768-1991; AS3100		
Category IEC/VDE/UL	II/C/ Type 4 CA		
Rated load Current	5A , 10 A , 20 A , 32 A , 45 A		
Power system (single phase)	220-277 V		
Max. continuous operating voltage (AC/DC)	320/420		
Connecting cable	Power 8-10 AWG, Alarm 14-22 AWG,		
Number of ports	2 Port		
Protection modes	Three mode protection(Line-Neutral, Line-Earth, Neutral-Earth)		
Nominal discharge current(8/20) In	L-N 20 kA, N-E 10 kA, L-E 10 kA		
Max. discharge current(8/20) I _{max}	L-N 50 kA, N-E 25 kA, L-E 25 kA		
Temporary overvoltage - TOV	400 VAC		
Voltage protection level (L/N-PE;L-N)	@ In	< 1.5 kV	
	@ VPR	< 1.0 kV	
Filter attenuation	>60dB @ 1MHz / >15dB @ 100 kHz / >0.5dB @ 1 kHz		
Residual current	<5 mA		
Short circuit withstand (1 sec)	80 A		
Response time	≤ 25 ns		
External disconnector requirements	32A gL/gG fuse or MCB		
Thermal technology	With thermal disconnector design MOV (PTMOV) on primary MOVs		
Protect Status Indication	2 part display, Power OK, Protection fault./ dry contact alarm relay 250Vac/32Vdc, 5A		
Environment	-10 to 60°C, 0 to 90%RH (non-condensing)		
Termination size	Single-strand 35 mm ² ; multi-strand 25 mm ²		
Mounting	Fixed. Surface mount		
Degree of protection	IP20		
Dimension	220 mm (L) x 143 mm (W) x 48 mm (H)		
Weight	1 kg		

Ordering information			
Model No.	S-BSF50-1/320-20A	S-BSF50-1/320-32A	S-BSF50-1/320-45A
Part No.	201252	201253	201254
Warranty	1 year from Delivery date		
Packing unit	1 pc(s).		

Contact us

You can find the address of your local sales organisation on the home page



www.sefco.co.th



www.sefco23.com



LINE



Facebook



WeChat



WhatsApp

SEFCO - Tel. : +66 (0) 3811 9780-2

SEFCO - Fax. : +66 (0) 3811 9783